

4855452 INTERNATIONAL RECTIFIER

55C 05192 D
T-23-07

INTERNATIONAL RECTIFIER 

16MB-W SERIES
16A rectifier bridges

Major Ratings and Characteristics

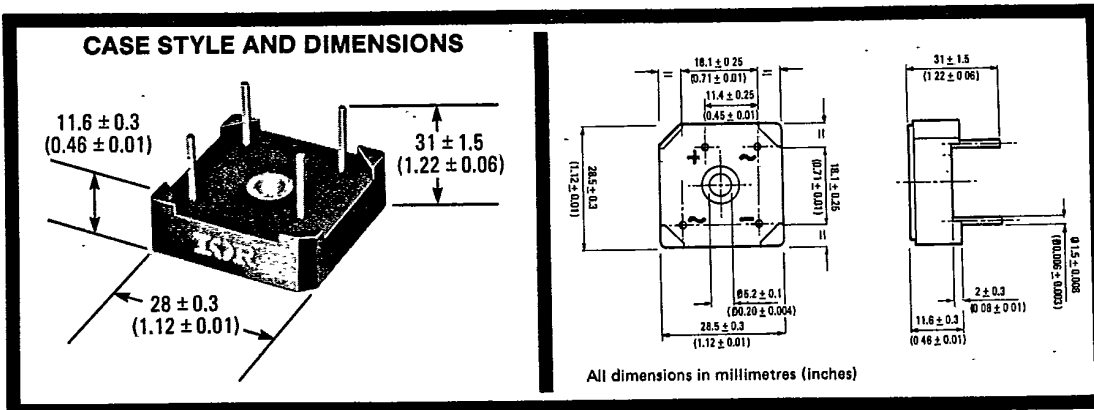
	16MB...W	Units
I_O	.16	A
I_{FSM}	@ 50 Hz	300
	@ 60 Hz	314
V_{RRM}	50 to 1200	V

Description/Features

The 16MB-W series of single phase encapsulated bridges is rated at 16A and is available up to 1200 V_{RRM} .

- Suitable for printed circuit board mounting.
- Isolated base plate allowing for additional heatsinking.
- High surge capability.

D



4855452 INTERNATIONAL RECTIFIER
16MB-W Series

55C 05193 D
INTERNATIONAL RECTIFIER 

T-23-07

VOLTAGE RATINGS

Part Numbers ^①	V _{RRM} - Max. Peak Reverse Voltage (V)	V _{RSM} - Max. Non-Repetitive Peak Reverse Voltage (V)
16MB05W	50	75
16MB10W	100	150
16MB20W	200	275
16MB40W	400	500
16MB60W	600	725
16MB80W	800	900
16MB100W	1000	1100
16MB120W	1200	1300

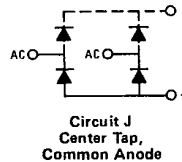
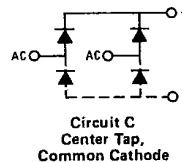
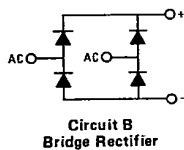
ELECTRICAL SPECIFICATIONS

	16MB...W	Units	Conditions
I _O Max. DC output current	16	A	Resistive or inductive load T _C = 75°C
	12.8		Capacitive load
I _{FSM} Max. peak one cycle, non-repetitive surge current	300	A	50 Hz half cycle sine wave or 6 ms rectangular pulse
	314		60 Hz half cycle sine wave or 5 ms rectangular pulse
I ² t Max. I ² t capability for fusing ^②	450	A ² s	t = 10 ms Rated V _{RRM} applied following surge, initial T _J = max. operating junction temperature.
	410		t = 8.3 ms
	636	A ² s	t = 10 ms V _{RRM} = 0 following surge, initial T _J = max. operating junction temperature.
	580		t = 8.3 ms
I ² √t Max. I ² √t capability for fusing	4500	A ² √s	V _{RRM} following surge = 0, t = 0.1 to 10 ms.
V _{FM} Max. peak forward voltage	1.16	V	I _{FM} = 25A _{pk} , T _J = 25°C
I _{RM} Max. peak reverse current	10	μA	T _J = 25°C
	2000		T _J = T _J max. per diode, at rated V _{RRM}
V _{ins} RMS isolation voltage	2700	V _{RMS}	Base plate to any terminal

② I²t for time t_x = I²√t · √t_x

THERMAL-MECHANICAL SPECIFICATIONS

T _J	Operating junction temperature range	-40 to 150	°C	
R _{thJC}	Thermal resistance, junctions-to-case	2.1	K/W	
R _{thCS}	Thermal resistance, case-to-sink	0.2	K/W	Mounting surface flat, smooth and greased
f	Operating frequency range	40 to 1000	Hz	
wt	Approximate weight	20 (0.71)	g (oz.)	
	Locking torque on centre fixing hole	4	Nm	Applied to M5 fixing screw



To use as a Center Tap assembly connect load either to positive or negative output terminal, as desired.
Current ratings are the same for all three applications.

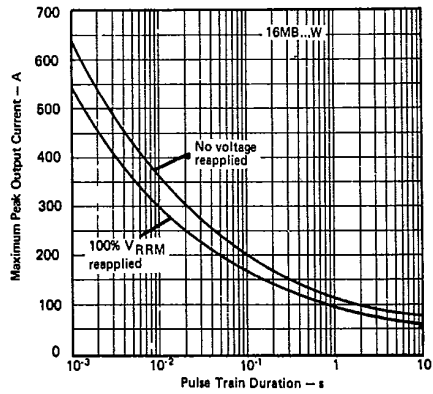
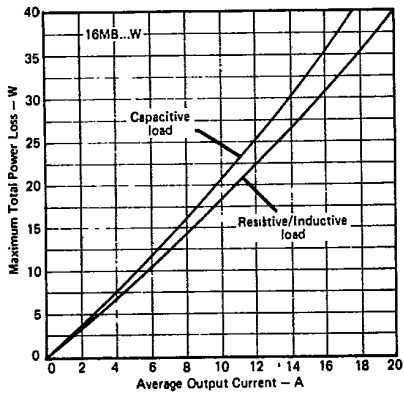
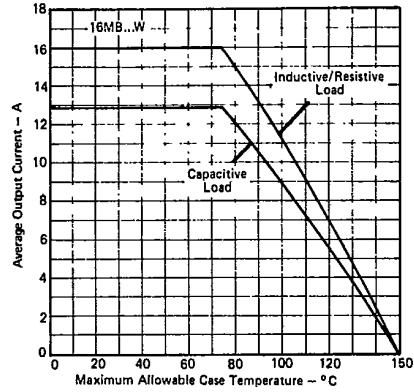
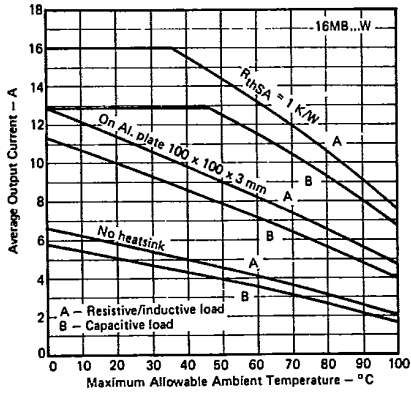
4855452 INTERNATIONAL RECTIFIER

55C 05194 D



16MB-W Series

T-23-07



D